



The New Hobart High School Brickie Pride Campus Beautification



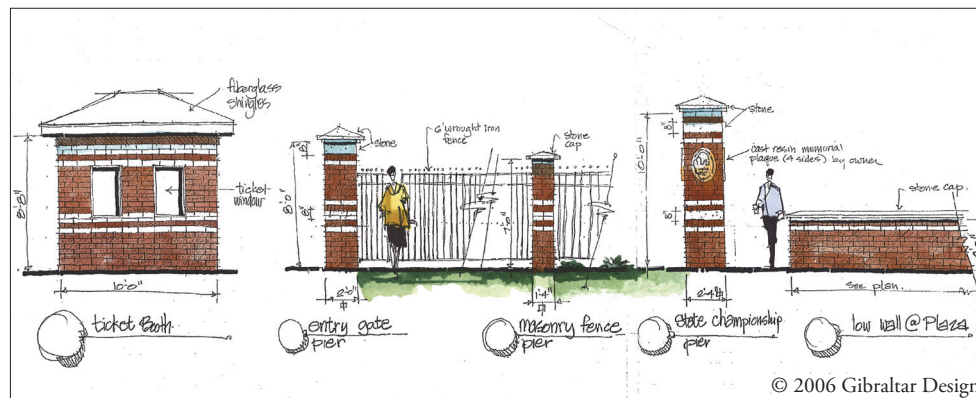
How Campus Beautification Started

The Class of 1956 came together with the mission to inspire and motivate other alumni to become involved and contribute to the new high school effort. It is not too bold a statement to boast of "Brickie Pride" and the overall feelings expressed by alumni. The Class of 1956 approached the district with an idea to spark enjoyment at the new campus with a 'Walk of Memories' to express that pride. Booster clubs wanted to capture that sentiment as well. Through a long-range campus beautification program, the School City of Hobart envisions a living testament to our commitment of academic excellence and invites the community to participate in a program called "Brickie Pride Campus Beautification."

Whether you would like to donate a monetary gift for campus beautification at the new high school or be a visitor to our high school, please know that the gift of TIME to support and assist the high school with so many of its endeavors is of equal or greater value. We are pleased to announce that the School City of Hobart's Educational Foundation will help coordinate the gift giving of "Brickie Pride Campus Beautification." Thank you to the Class of 1956 for being the very first group to step forward with a donation to assist the district with a campus beautification and historical retrospective of the tremendous "Brickie Pride" felt by all of our alumni and community members.



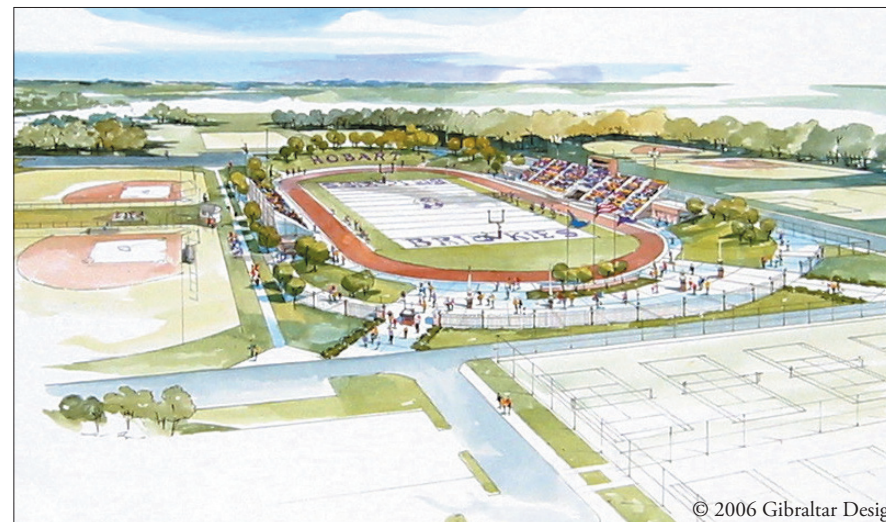
Performing Arts Entry



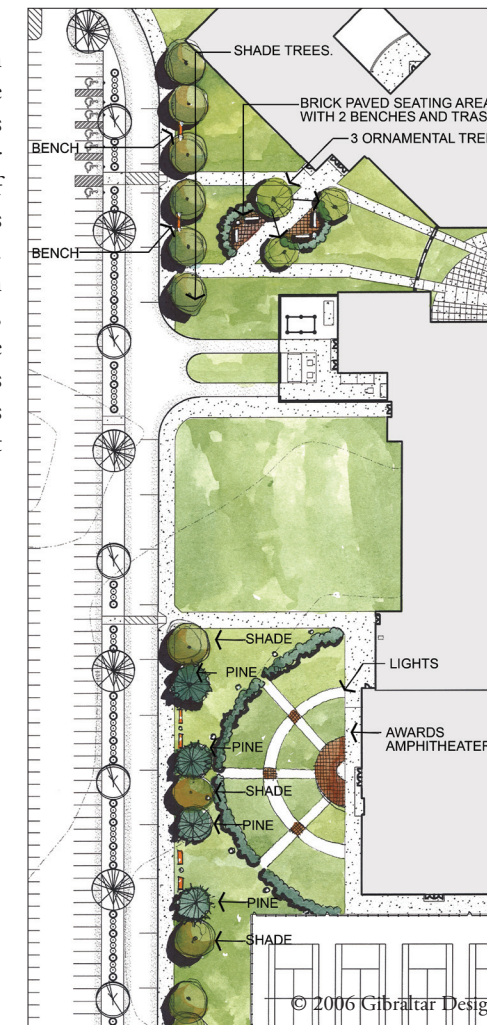
Stadium Entrance

Stadium and Plaza Features

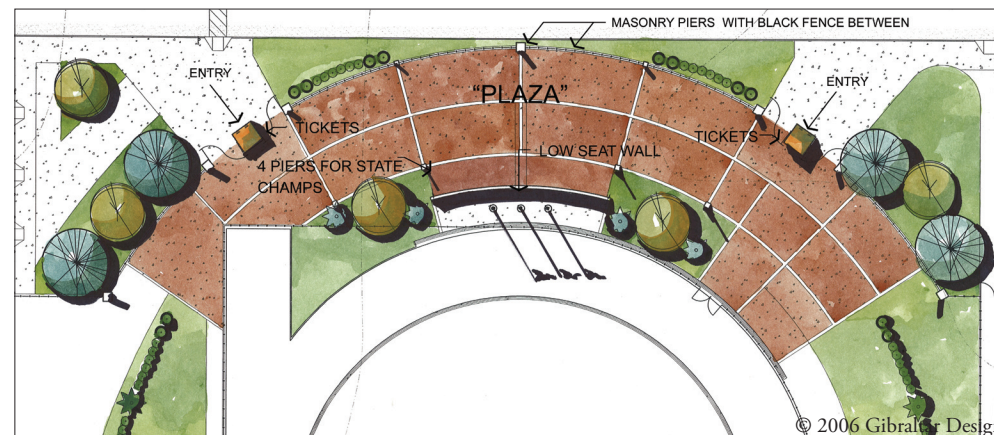
Sports has long been the tradition of Hobart High School students and the community. To carry on the celebration of this tradition, the new stadium was designed as a "special" place where sports enthusiasts can congregate for game viewing and camaraderie building. To create a streamlined look to the stadium, concession stands, storage areas, trainer rooms and locker facilities are tucked under the bleachers. At the east end of the stadium, grassed areas entice those whose school spirit is manifested more through social interaction than by play-by-play view and analysis. The plaza serves as the welcoming beacon to the stadium. The plaza's walk of brick pavers and championship columns are constant reminders of Hobart's unique identity and legendary sports history. A brick seating wall surrounded by shade trees and low plantings encourages gathering before, during and after football games.



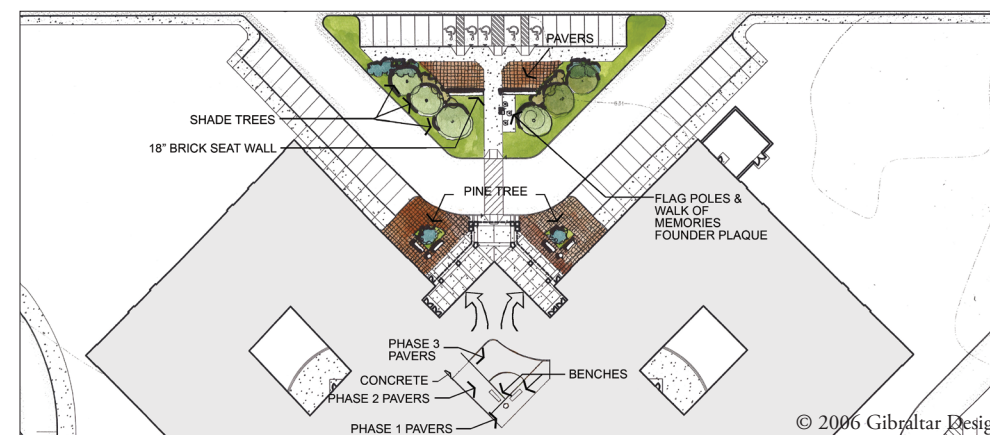
Overall South Campus View



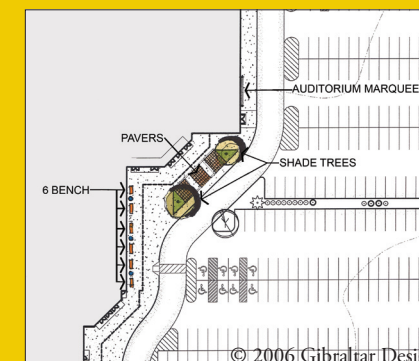
Student Entry / Awards Amphitheater



Plaza



Front Island



Performing Arts

Student Entry and Front Island

Many student-centered enhancements have been made to the high school to encourage the more social aspects of learning. One of these enhancements is the front island through which students enter and leave the building. This island is comprised of benches nestled in between trees and other plantings and creates a relaxed setting for student interaction. This visually pleasing entryway provides orientation and individual identity for the students. Likewise, the front island also serves as a reminder to the community that lifelong memories and traditions result from collaboration. The student entry furthers these thoughts by providing an inviting environment for students as they enter or leave the building.

How You Can Give

The overall "Brickie Pride Campus Beautification" planning team, including the School Board and Administration, Architect, Construction Manager, Alumni, Booster Clubs, and Educational Foundation, all recognize the potential for standout "Brickie Pride." The School Board did not want to "initiate" any planning that would cause "additional" tax dollars to be spent, as the ultimate budget is important. Thus there was a focus on implementing practical and current needs on concepts already identified. The planning opportunities include:

- \$35 donation for an engraved brick
- \$700 - \$1,000 tree and bench gifts
- \$7,500 brick championship columns

A meaningful and long lasting series of gift giving components for individuals, groups, and corporations have been chosen. If you are inclined to get involved with "Brickie Pride Campus Beautification," please use the pull-out gift giving form included. There is something for everyone! Thank you in advance for considering your involvement with a campus beautification and historical retrospective of the tremendous "Brickie Pride" felt by all of our wonderful alumni and community members.

"Once a Brickie, Always a Brickie!"

BRICKIE PRIDE CAMPUS BEAUTIFICATION

The School City of Hobart envisions a living testament to our commitment of academic excellence and invites the community to participate in a program called "Brickie Pride Campus Beautification." Whether you would like to donate a monetary gift for campus beautification at the new high school or be a visitor, please know that the gift of TIME to support and assist the high school with so many of its endeavors is of equal or greater value. Thank you in advance for assisting the district with a campus beautification and historical retrospective of the tremendous "Brickie Pride" felt by all of our wonderful alumni and community members. *"Once a Brickie, Always a Brickie!"*



INDIVIDUAL, GROUP, OR CORPORATE GIFT GIVING

Please check the circle by the appropriate gift and fill out all necessary information on the following pages.

- ☐ **Bricks 4 X 8** (choose location & engraving on back) \$35
- ☐ **Tree** (plaque) \$700
- ☐ **Concrete Bench** (plaque) \$1,000
- ☐ **Light Post** (plaque) \$1,500
(Plaza or Awards Amphitheatre)
- ☐ **Brick Seat Wall** (plaque) (front of school) \$4,000

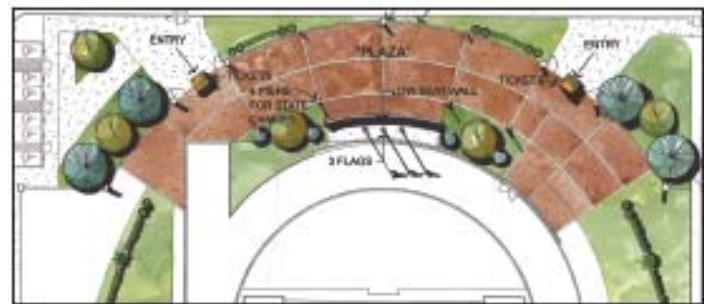
PLAZA

Please check the circle by the appropriate gift and fill out all necessary information on the following pages.

- ☐ **Bricks 8 X 8** (engraving) \$100
Location: Plaza only
- ☐ **Brick Pier** (plaque) \$5,000
- ☐ **Championship Brick Column** (plaque) \$7,500
- ☐ **Baseball Dugout** (plaque) \$30,000
- ☐ **Softball Dugout** (plaque) \$30,000
- ☐ **Baseball/Softball Press Box** (plaque) \$65,000



Front Island



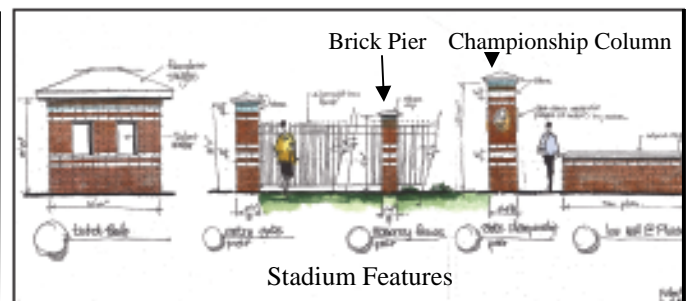
Plaza



Awards Amphitheatre



Performing Arts



Stadium Features









Stadium

BRICK ORDER FORM

___ **4 x 8 BRICK-3 LINES-13 CHARACTERS PER LINE (INCLUDES SPACES)** @ **\$35.00 PER BRICK** ICON # ___

___ **8 x 8 BRICK-6 LINES-13 CHARACTERS PER LINE (INCLUDES SPACES)** @ **\$100.00 PER BRICK** ICON # ___

ICONS

Icons 1-5 require 3 spaces on 2 lines	1  Heart	2  Music	3  Art	4  Drama	5  Diploma	6  Yohan requires 6 spaces on 3 lines
--	---	---	---	---	---	--

John Doe
Class of
2007
Sample 4 X 8

School
Logo
John Doe
Principal
1986—2007
Sample 8 X 8

Icons are available at no additional charge (2 icons per brick). Please allow 3 spaces on 2 lines for each icon except for the Yohan. Yohan requires 6 spaces on 3 lines. Indicate placement below, however, the engraving company reserves the right to edit text and determine the location of the icon.

PLEASE PRINT IN CAPITAL LETTERS ONLY AS YOU WISH THE INSCRIPTION TO APPEAR ON THE BRICK.

4X8 BRICK LOCATION: ☐ Front ☐ Performing Arts ☐ Student Entry ☐ Awards Amphitheatre

Line 1 _____

Line 2 _____

Line 3 _____

8x8 BRICK LOCATION: Plaza

Line 1 _____

Line 2 _____

Line 3 _____

Line 4 _____

Line 5 _____

Line 6 _____

Please complete the following:

YOUR NAME: _____

ADDRESS: _____ CITY: _____ STATE: _____

ZIP CODE: _____ TELEPHONE # _____

CHECK # _____ AMOUNT \$ _____

PLEASE MAKE YOUR TAX-DEDUCTIBLE CHECK PAYABLE TO:

SCHOOL CITY OF HOBART EDUCATIONAL FOUNDATION

Please write **Brickie Pride** in the memo section of your check. Thank You.

Mail or bring form and payment to:

School City of Hobart Administration Office
Att: Brickie Pride
32 E. 7th Street
Hobart, IN. 46342



If you would like to make a
monetary academic donation,
please notify
School City of Hobart
Administration Office
219-942-8885

PLAQUE ORDER FORM



Please check your choice:

☐ I would like to donate a tree for \$700. ☐ I would like to donate a concrete bench for \$1,000.

3 lines with 25 characters per line (includes spaces) Plaque size is 3" X 10"

INSCRIPTION

PLEASE PRINT IN CAPITAL LETTERS ONLY AS YOU WISH THE INSCRIPTION TO APPEAR ON THE PLAQUE.

Line 1 _____

Line 2 _____

Line 3 _____

☐ I would like to donate a light post for \$1,500.

4 lines with 13 characters per line (includes spaces) Plaque size is 4" X 6"

INSCRIPTION

PLEASE PRINT IN CAPITAL LETTERS ONLY AS YOU WISH THE INSCRIPTION TO APPEAR ON THE PLAQUE.

Line 1 _____

Line 2 _____

Line 3 _____

Line 4 _____

☐ I would like to donate a Brick Seat Wall for \$4,000. ☐ I would like to donate a Brick Pier for \$5,000.

☐ I would like to donate a Championship Brick Column for \$7,500.

8 lines with 25 characters per line (includes spaces) Plaque size is 8" X 10"

INSCRIPTION

PLEASE PRINT IN CAPITAL LETTERS ONLY AS YOU WISH THE INSCRIPTION TO APPEAR ON THE PLAQUE.

Line 1 _____

Line 2 _____

Line 3 _____

Line 4 _____

Line 5 _____

Line 6 _____

Line 7 _____

Line 8 _____



Please fill out name and address on the back.

PLAQUE ORDER FORM CONTINUED

☐ I would like to donate a baseball dugout for \$30,000. ☐ I would like to donate a softball dugout for \$30,000.
12 lines with 25 characters per line (includes spaces) Plaque size is 12" X 16"

INSCRIPTION

PLEASE PRINT IN CAPITAL LETTERS ONLY AS YOU WISH THE INSCRIPTION TO APPEAR ON THE PLAQUE.

Line 1 _____
Line 2 _____
Line 3 _____
Line 4 _____
Line 5 _____
Line 6 _____
Line 7 _____
Line 8 _____
Line 9 _____
Line 10 _____
Line 11 _____
Line 12 _____

☐ I would like to donate a baseball press box for \$65,000. ☐ I would like to donate a softball press box for \$65,000.
18 lines with 25 characters per line (includes spaces) Plaque size is 18" X 14"

INSCRIPTION

PLEASE PRINT IN CAPITAL LETTERS ONLY AS YOU WISH THE INSCRIPTION TO APPEAR ON THE PLAQUE.

Line 1 _____
Line 2 _____
Line 3 _____
Line 4 _____
Line 5 _____
Line 6 _____
Line 7 _____
Line 8 _____
Line 9 _____
Line 10 _____
Line 11 _____
Line 12 _____
Line 13 _____
Line 14 _____
Line 15 _____
Line 16 _____
Line 17 _____
Line 18 _____

Please complete the following:

YOUR NAME: _____

ADDRESS: _____ CITY: _____ STATE: _____

ZIP CODE: _____ TELEPHONE # _____

CHECK # _____ AMOUNT \$ _____

PLEASE MAKE YOUR TAX-DEDUCTIBLE CHECK PAYABLE TO:

SCHOOL CITY OF HOBART EDUCATIONAL FOUNDATION

Please write **Brickie Pride** in the memo section of your check. Thank You.

Mail or bring form and payment to:

School City of Hobart Administration Office

Att: Brickie Pride

32 E. 7th Street

Hobart, IN. 46342



If you would like to make a
monetary academic donation,
please notify
School City of Hobart
Administration Office
219-942-8885